



SP2-A

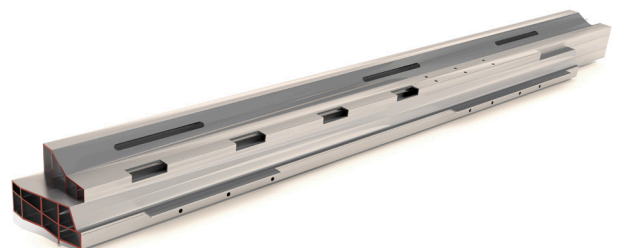
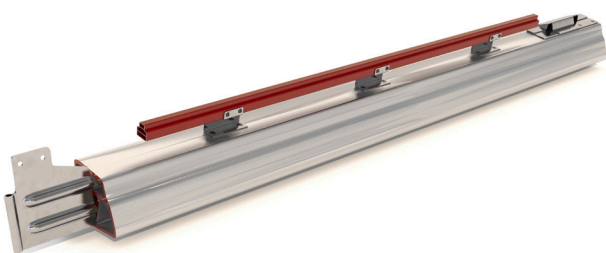
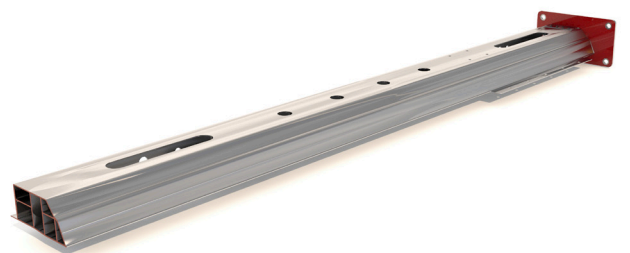
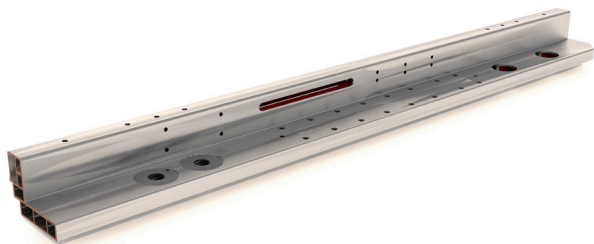
SP2-A the fastest profile processing machine

The ANGER SP2-A machine is the most efficient solution for processing extruded aluminum profiles. While both processing spindles are working on one processing bridge, loading and unloading takes place on the second bridge parallel to machining time

YOUR ADVANTAGES

- Highly efficient processing thanks to minimal non-productive times
- Maximum flexibility
- Highest possible energy efficiency

TYPICAL PARTS

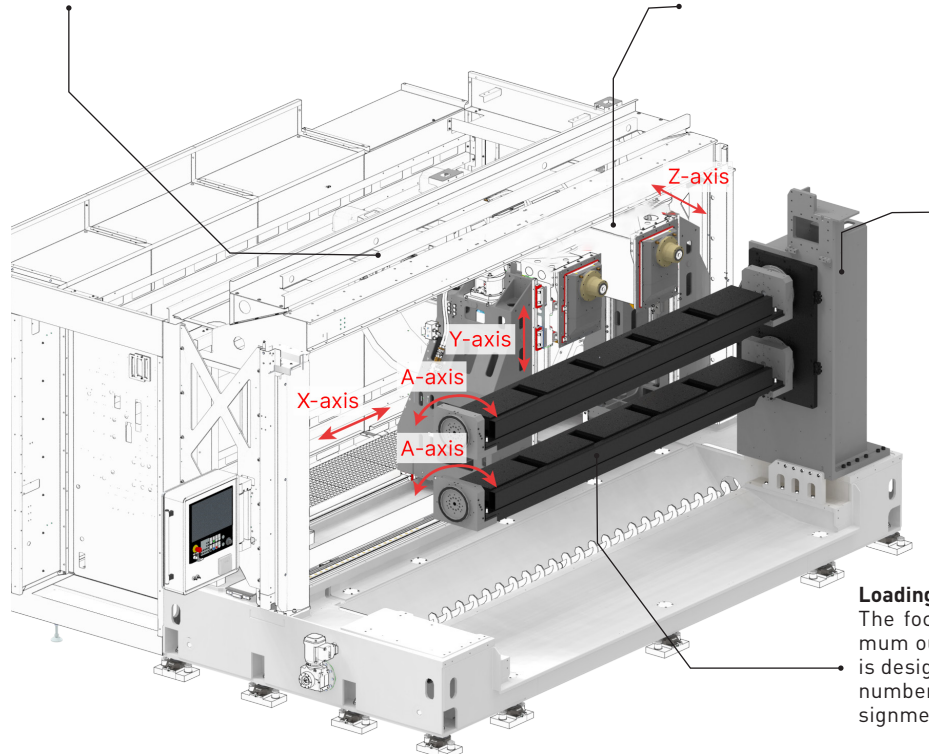


Tool changer

2 disk magazines, each with 29 tool slots, provide the required tools for optimum and fast machining. Thanks to the very simple design, the magazines are maintenance-free. The maximum tool length is 350 mm.

Independent columns

The proven, independent spindle systems on this machine also enable both spindles to work simultaneously on a very long component, parallel processing on both clamping bridges or simultaneous processing of two different components.



Two A-axes

The two A-axes are separated from each other and can be loaded and unloaded in parallel during machining using a robot. The A-axes, which are specially designed for profile processing, each have an interference circle of $\varnothing 560$ mm and, if necessary, processing can also be carried out through the A-axis. With a length of 3200mm, even the longest profiles can be clamped and effectively machined in double processing.

Loading process

The focus of this machine is on maximum output, which is why the machine is designed for 100% robot loading. The number of grippers depends on the assignment of the clamping nests.

Number of axes	Number of axes	4	axes
Spindles	Number of spindles	2	qty
	Spindle distance	variabel	mm
Working range	X-Axis	3200	mm
	Y-Axis	915	mm
	Z-Axis	630	mm
Maximum part size	X/Y/Z	3600/ $\varnothing 560$	mm
Feed	Acceleration [X/Y/Z]	5/5/10	m/s ²
	max. speed [X/Y/Z]	90/60/60	m/min
Accuracy	Repeatability according to VDI 3441/2617	0,002	mm
Spindle	Speed	0-18000	rpm
	Power [S1/S6]	30/50	kW
	Torque [S1/S6]	35/60	Nm
Tool magazine	Tool holder	HSK-A 63	
	Tool capacity	2 x 29 [2 x 41, 2 x 61]	qty
	max. tool diameter	95 [125] [80, 200]	mm
	Tool length	350	mm
	Tool weight	12	kg
	Chip-to-cip time	4,5	s
Weight / dimensions	Weight	23000	kg
	Dimensions (LxWxH)	5000/5300/3250	mm
Connected load	Operating Voltage	3 x 400	Volt
	Total connected load	110	kW
NC control	Siemens	Sinumerik 840 D sl	